

# PHYSIOLOGICAL, MORPHOLOGICAL AND GROWTH RESPONSE OF FIR AND BEECH ALONG THE GEOGRAPHICAL GRADIENT - BASIS FOR PREDICTING FUTURE DEVELOPMENT TRENDS

Agency	Years	PI	Co-PI
Grant Agency of the Czech Republic	10.2021 – 9.2024	Slovenian Forestry Institute (lead by M. Čater, T. Veljanovski)	CzechGlobe (E. Dařenová, O. Brovkina, M. Švik)

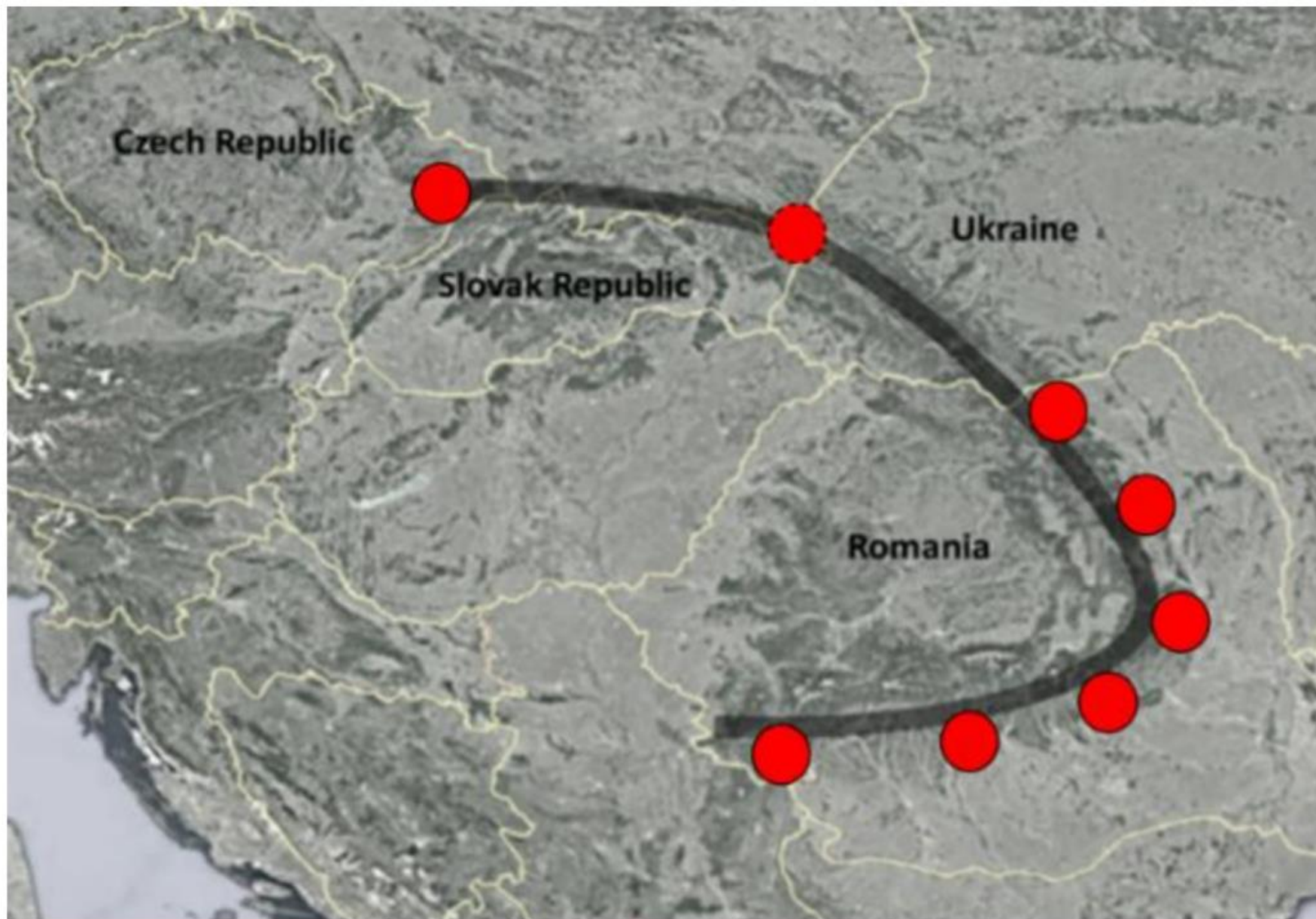


**GOZDARSKI INŠTITUT SLOVENIJE**  
SLOVENIAN FORESTRY INSTITUTE



The Silva Tarouca  
Research Institute  
for Landscape and  
Ornamental  
Gardening (VÚKOZ)





	PLOT
1	Tismana
2	Arefu
3	Zagon
4	Soveja
5	Tarcau
6	Frumosu
7	Slovakia
8	Salajka



GOZDARSKI INŠTITUT SLOVENIJE  
SLOVENIAN FORESTRY INSTITUTE



SLOVENSKA AKADEMIJA  
ZNANOSTI IN UMETNOSTI



MENDELU



CzechGlobe

Global Change Research Institute CAS



The Silva Tarouca Research  
Institute for Landscape and  
Ornamental  
Gardening (VÚKOZ)

# PHYSIOLOGICAL, MORPHOLOGICAL AND GROWTH RESPONSE OF FIR AND BEECH ALONG THE GEOGRAPHICAL GRADIENT - BASIS FOR PREDICTING FUTURE DEVELOPMENT TRENDS

WP1: Ecology of beech and silver fir

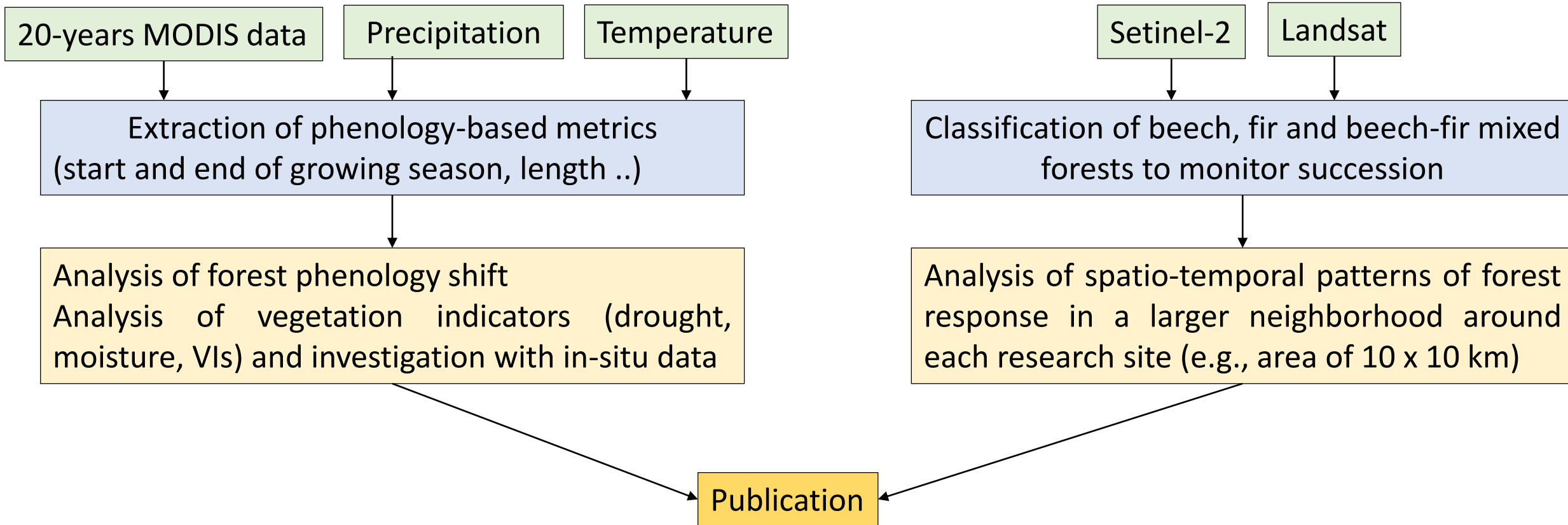
WP2: Beech and silver fir growth responses

WP3: Wood anatomy characteristics of beech and silver fir

WP4: Monitoring beech and fir forests with time series of satellite images

WP5: Modelling and future response scenarios of beech and silver fir

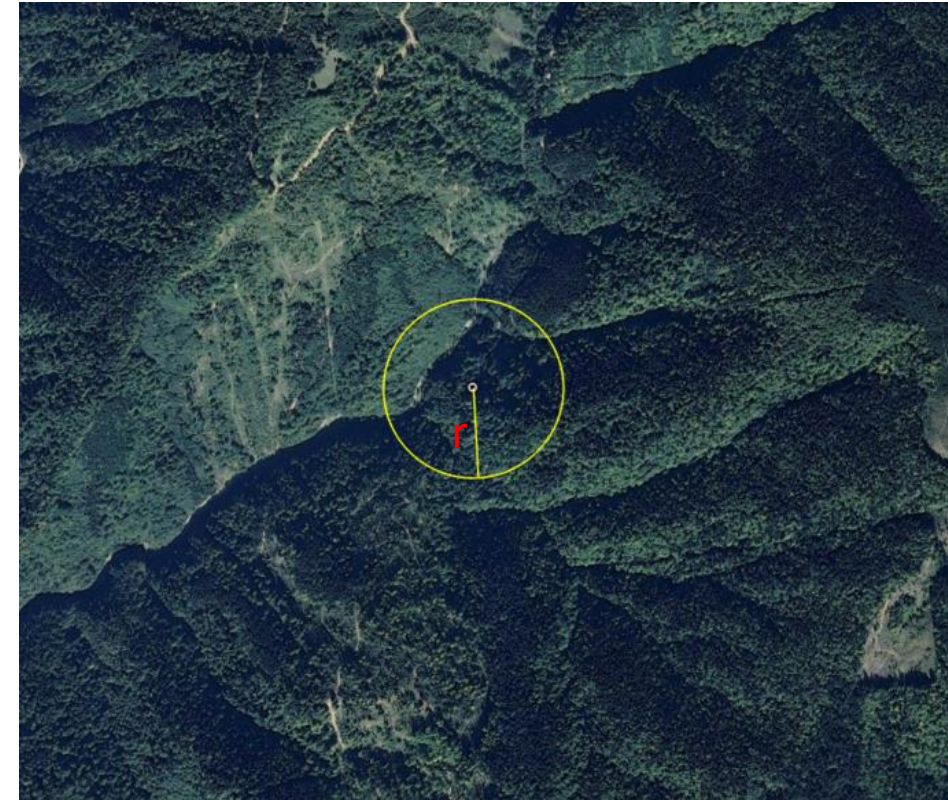
## WP4: Monitoring beech and fir forests with time series of satellite images



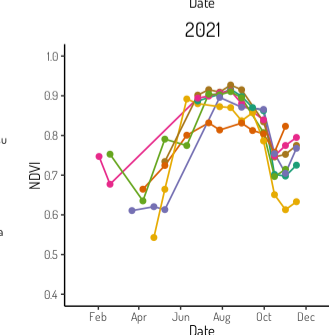
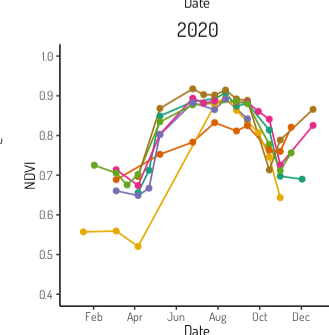
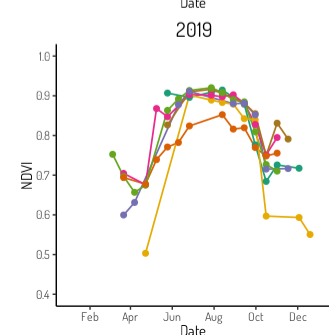
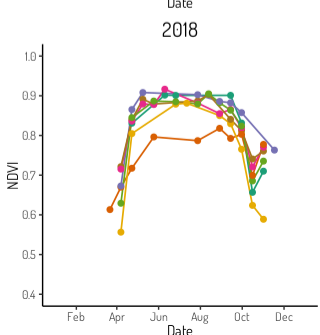
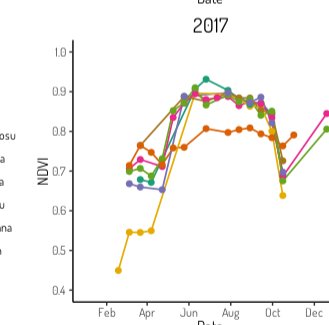
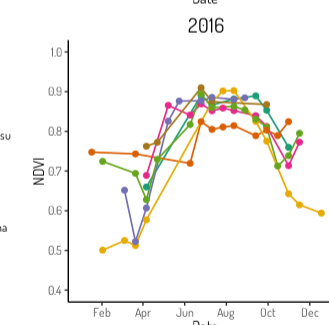
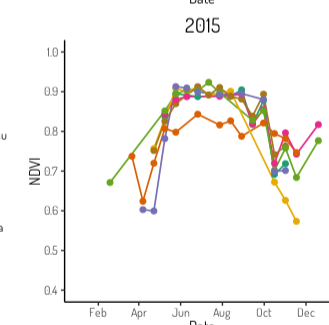
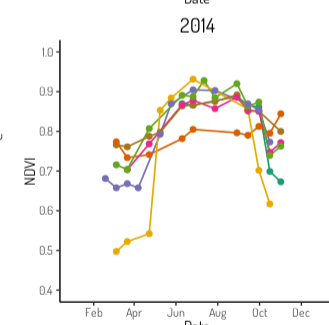
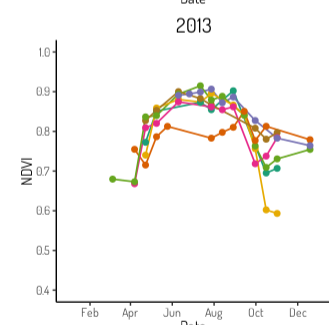
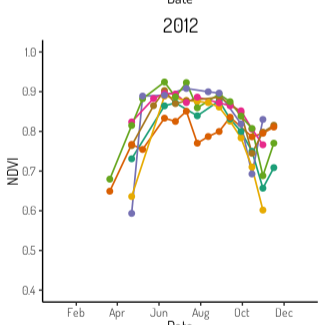
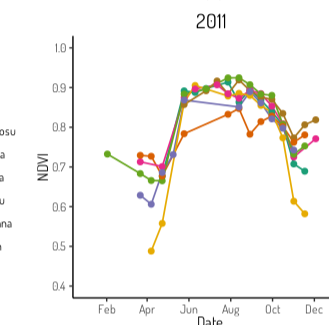
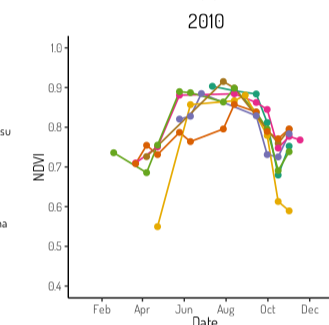
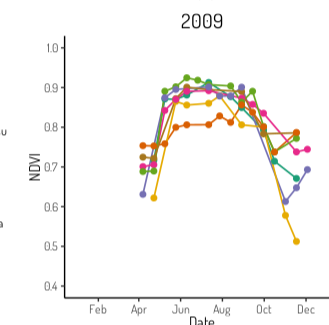
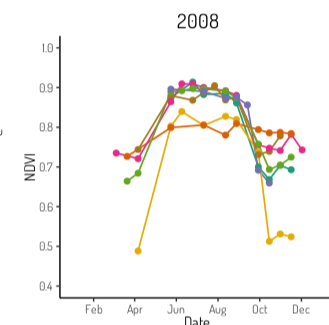
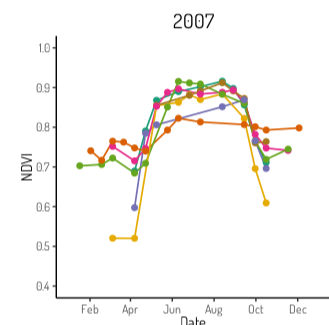
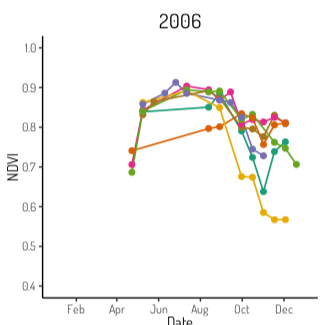
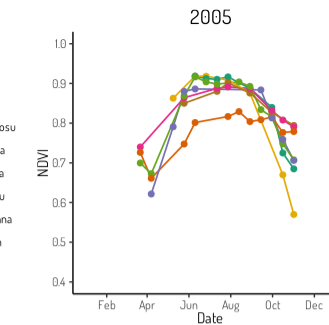
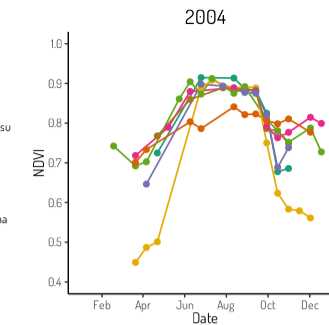
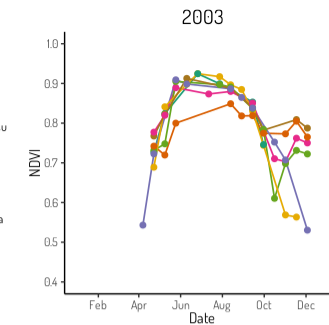
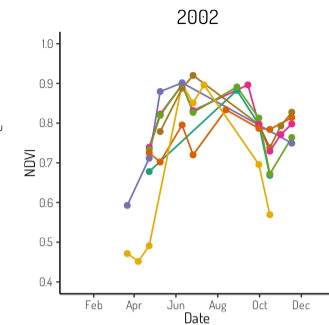
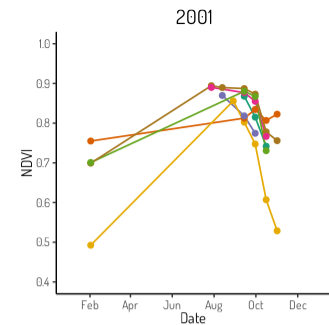
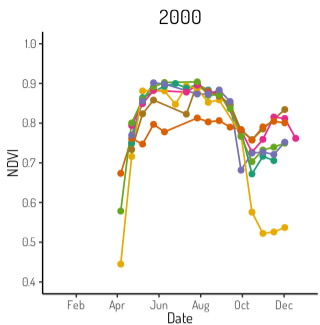
# GEE MODIS time-series

- NDVI/EVI product 250 m spatial resolution/16-day temporal resolution
- LAI/fPAR product 500 m spatial resolution/8-day temporal resolution
- data filtered according to their quality assesment band
- for each parameter a time-series for each year and each plot created

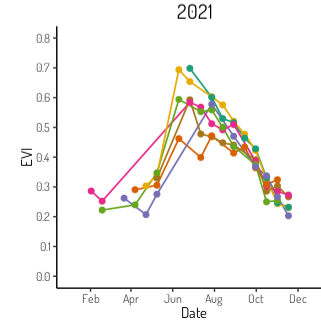
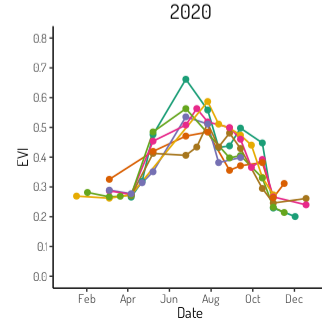
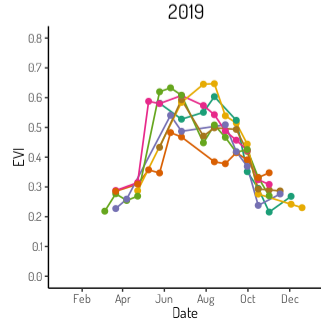
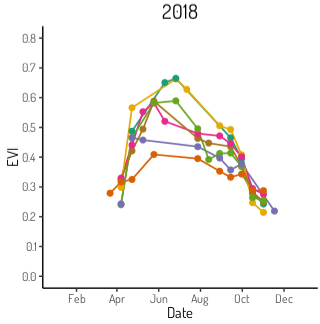
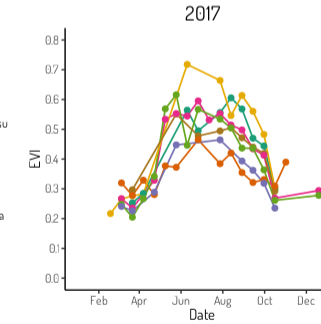
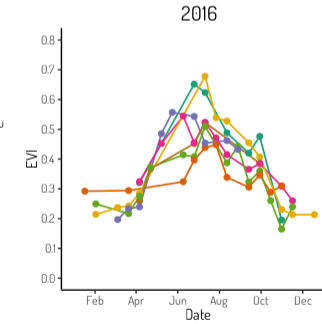
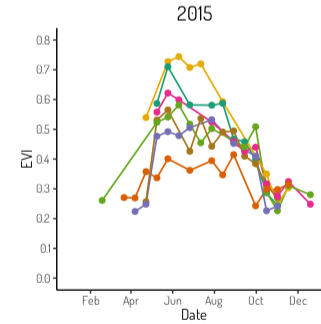
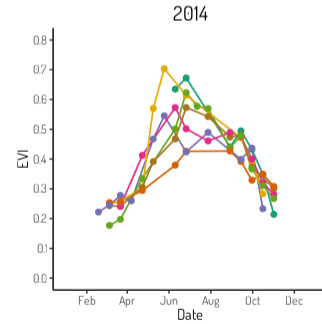
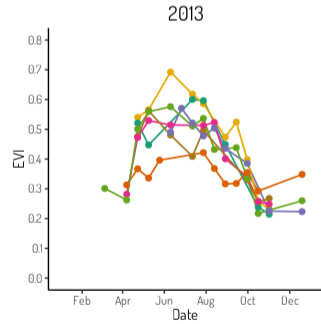
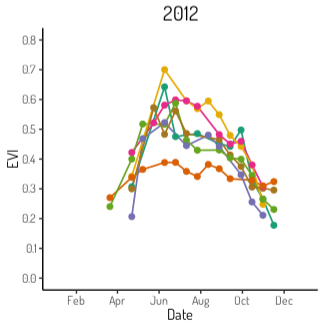
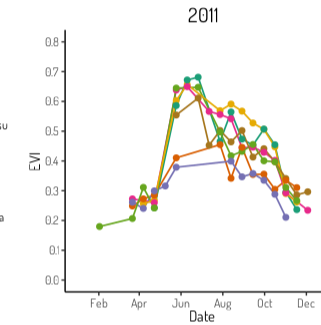
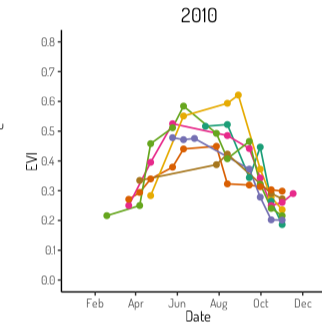
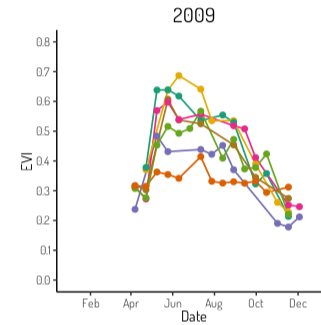
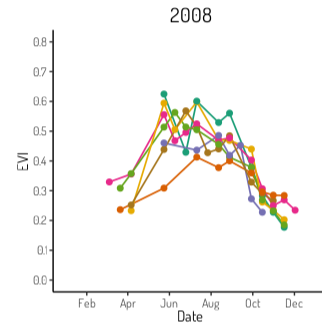
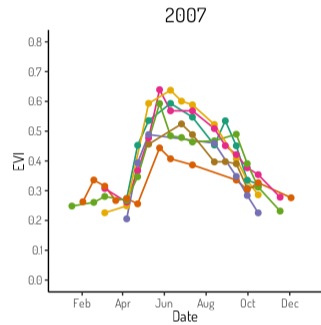
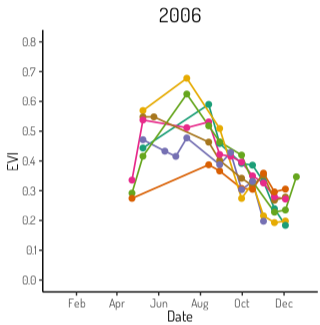
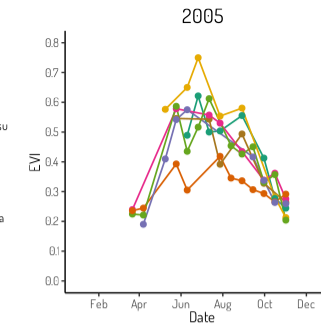
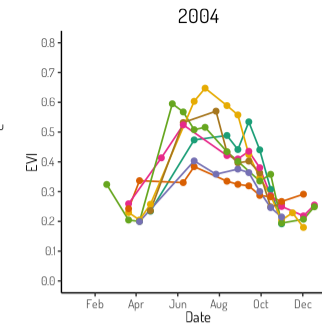
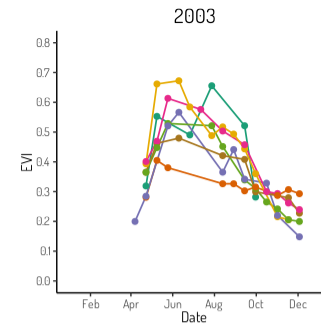
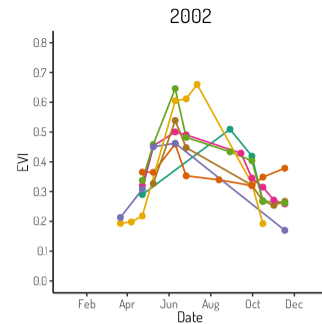
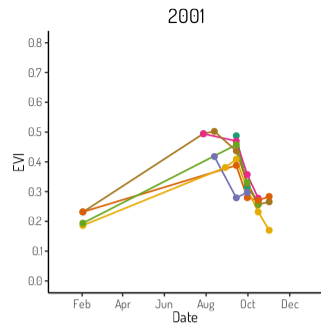
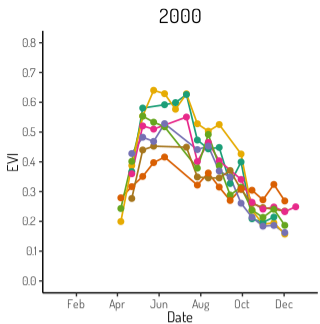
We used a buffer with  $r = 250$  m



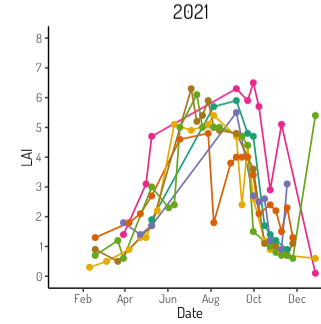
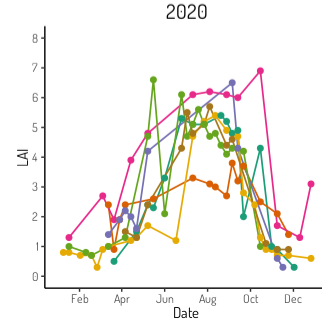
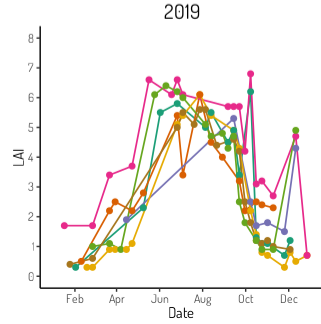
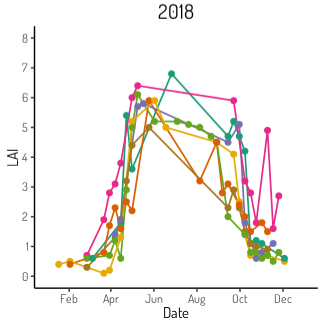
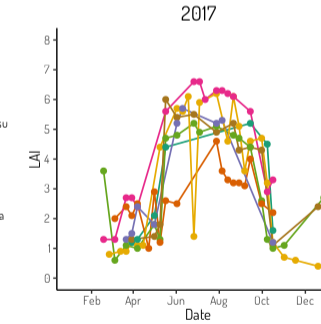
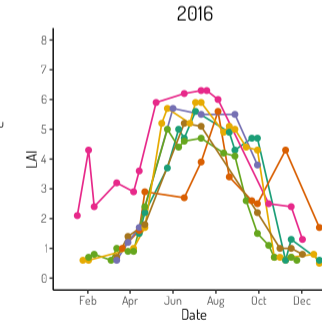
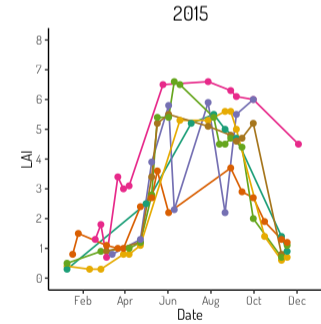
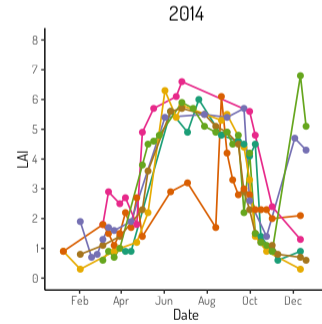
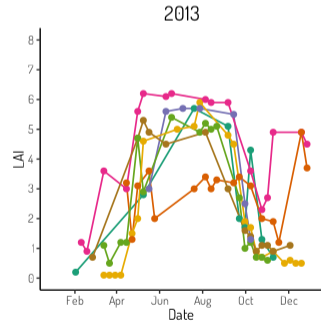
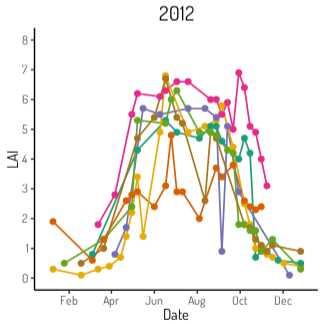
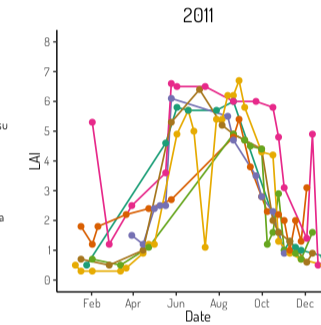
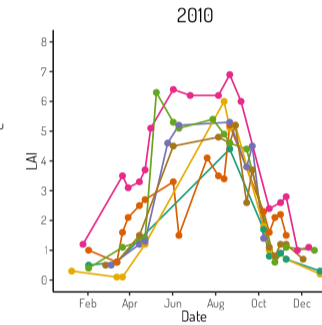
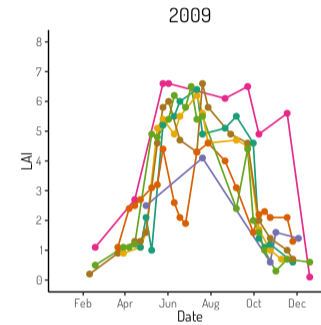
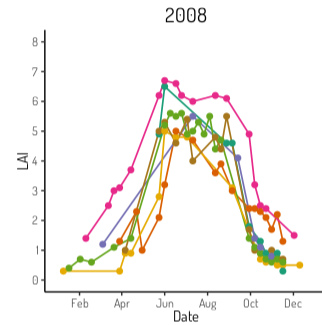
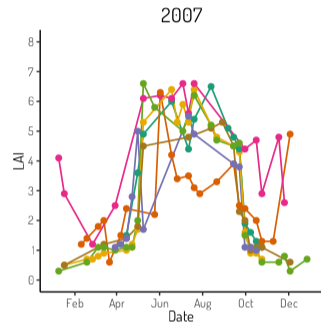
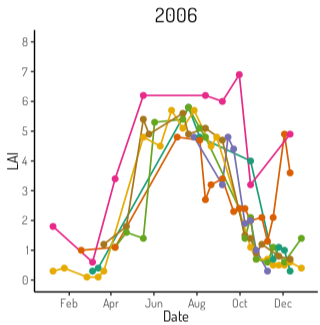
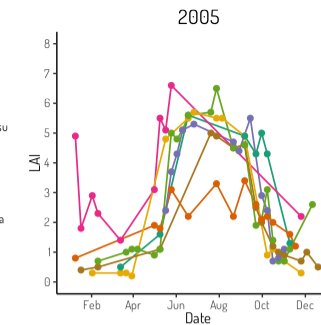
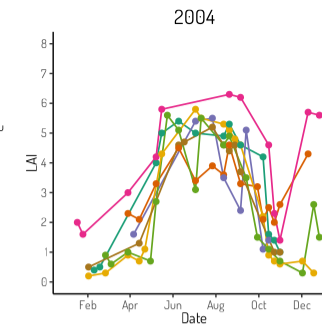
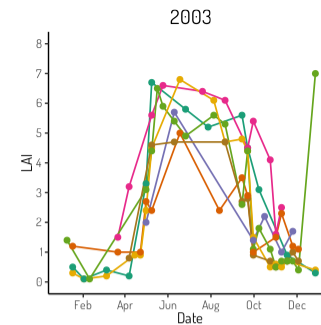
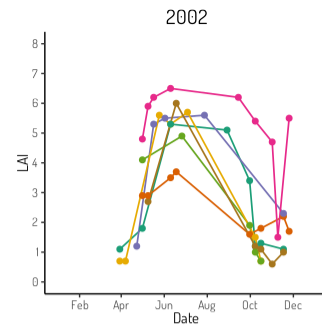
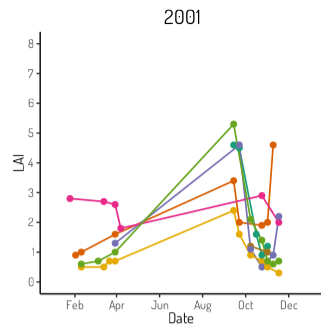
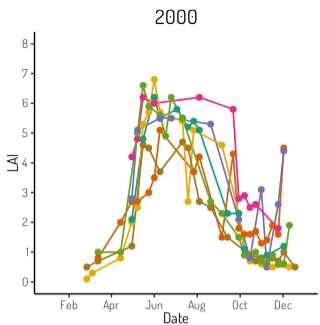
# NDVI



# EVI

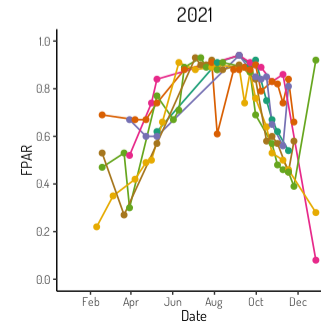
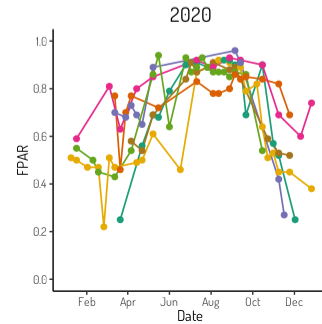
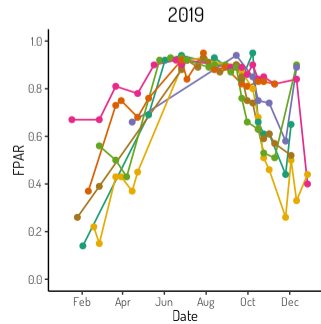
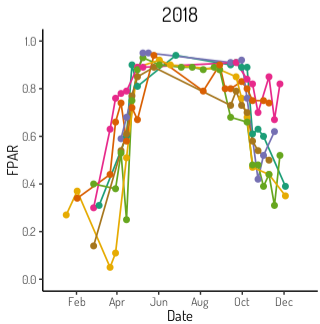
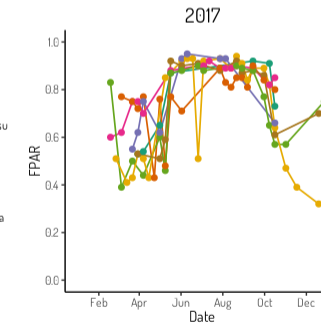
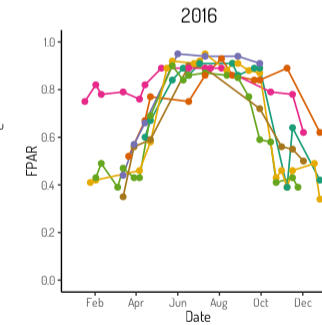
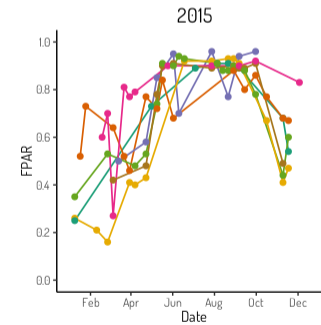
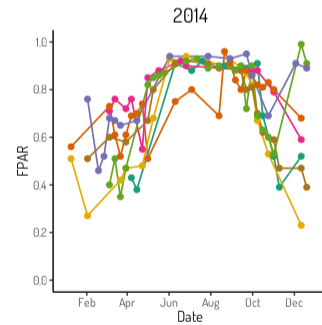
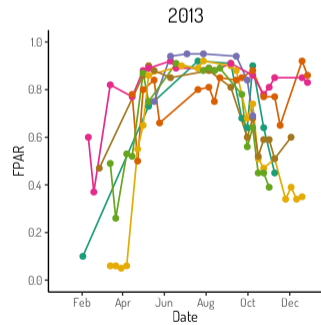
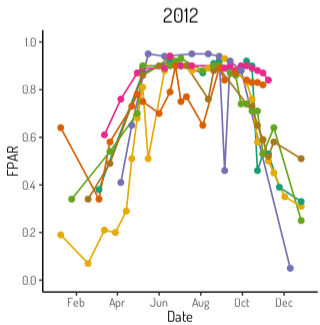
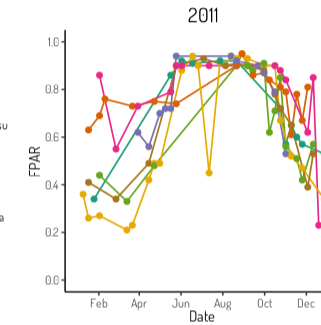
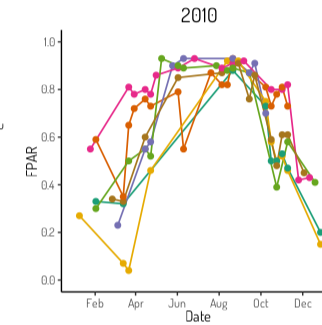
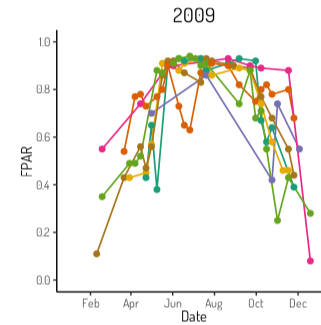
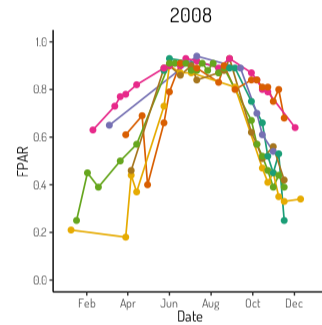
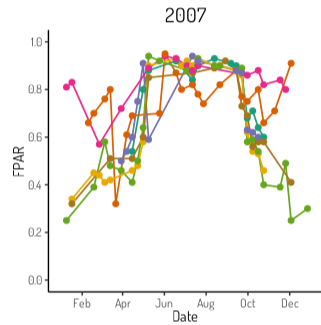
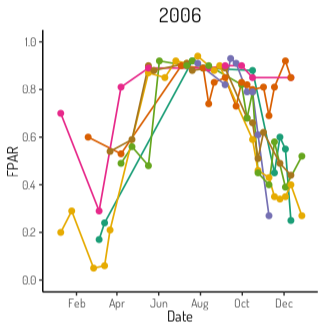
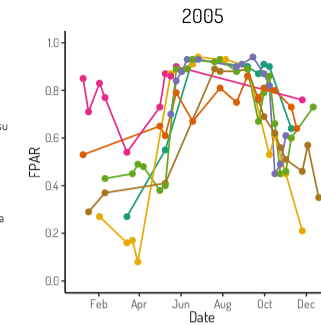
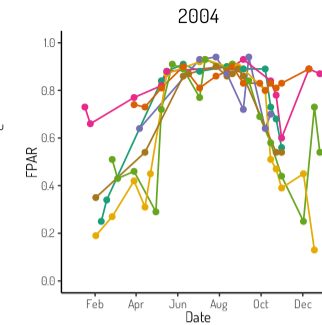
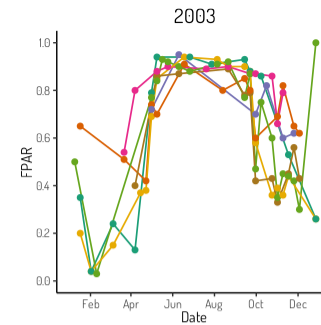
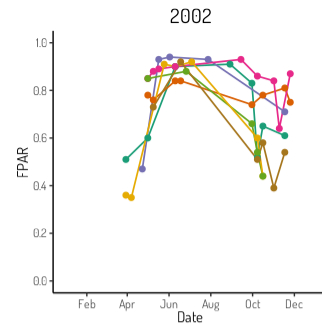
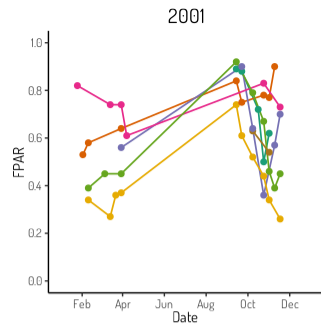
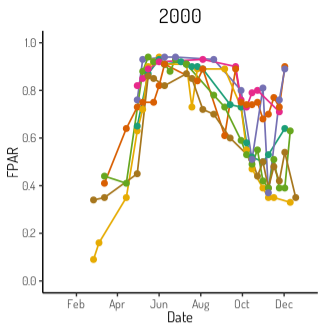


LAI





# FPAR



# To analyse MODIS time-series we will use:

- Species composition – fir and beech percentage for plot
- Forest structure
- Climate data time-series

# To analyse MODIS time-series we will use:

- Species composition – fir and beech percentage for plot
- Forest structure
- Climate data time-series



# Forest structure and species composition

WV-2 RGB composite

Satellite WorldView-2, GSD of 2 m

Spectral bands:

400-450 nm (coastal blue)

450-510 nm (blue)

510-580 nm (green)

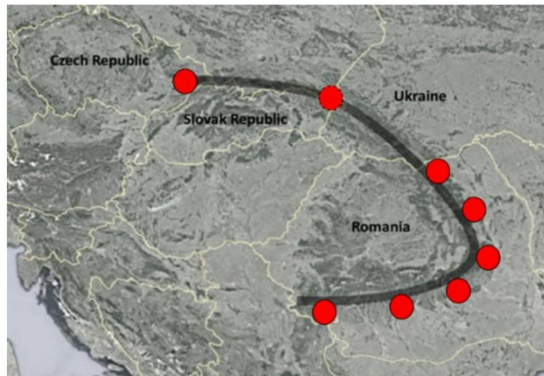
585-625 nm (yellow)

630-690 nm (red)

705-745 nm (red edge)

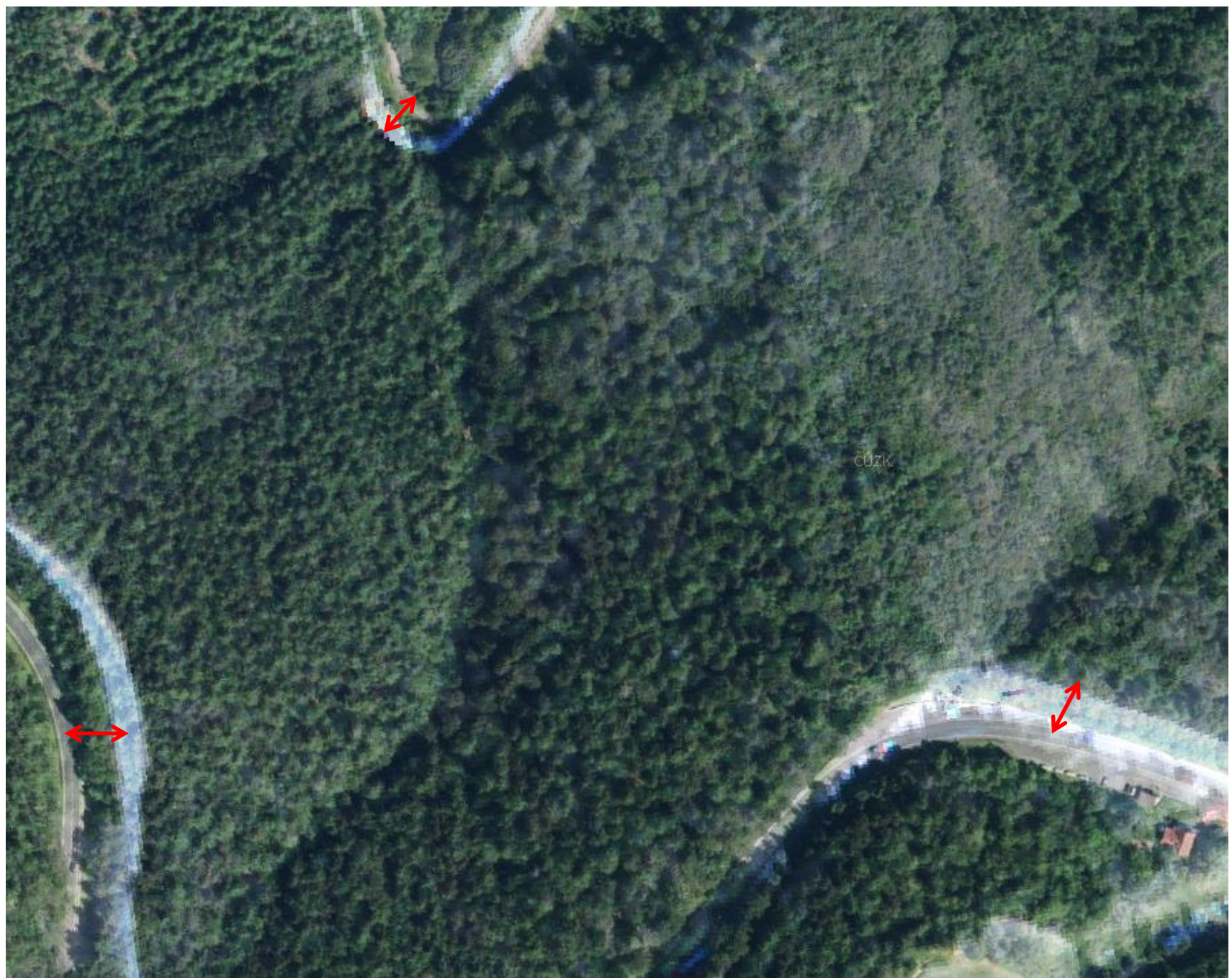
770-895 nm (NIR1)

860-1040 nm (NIR2)



Georectification  
of WV images

Mismatch  
from 15 to 20 m



Background layer is orthophoto, transparent top layer is WV-2 RGB composite

# Georectification of WV images

Mismatch  
from 15 to 20 m



Background layer is orthophoto, transparent top layer is WV RGB

# Thank you for your attention!



**GOZDARSKI INŠTITUT SLOVENIJE**  
SLOVENIAN FORESTRY INSTITUTE



SLOVENSKA AKADEMIJA  
ZNANOSTI IN UMETNOSTI



Global Change Research Institute CAS



The Silva Tarouca Research  
Institute for Landscape and  
Ornamental  
Gardening (VÚKOZ)