

SCERIN-1 Day 3, Wednesday, 19 June 2013

Scientific Field Trip: „*LCLUC in Sokolov Region in Northwestern Bohemia affected by mining activities*“

8:30 Departure in front of the building of the Faculty of Science, Albertov 6, Prague

app 11:00	Arrival to Sokolov
11:00-16:00	Open-cast mine Jiří overview (meeting with Petr Rojík from SU)
	Lunch (farm Bernard) Statek Bernard http://www.statek-bernard.cz/ .
	Lítov (former mine waste dump)
	Medard (artificial lake in the former coal mine Medard)
	Erika (former sand-pit)
16:00	Departure from Sokolov
16:30-19:00	Karlovy Vary (spa town)
app 21:00	Return to Prague

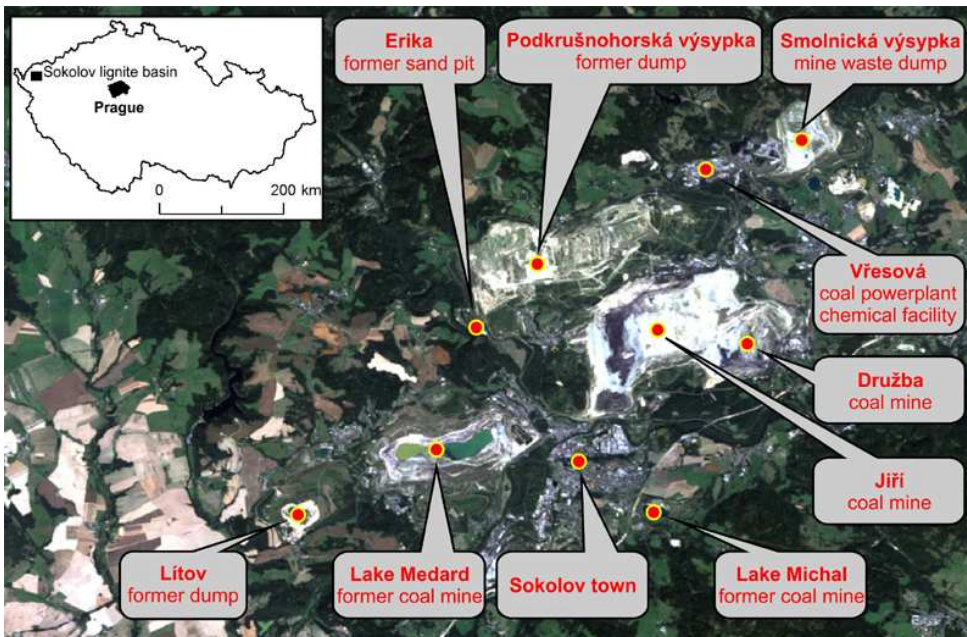
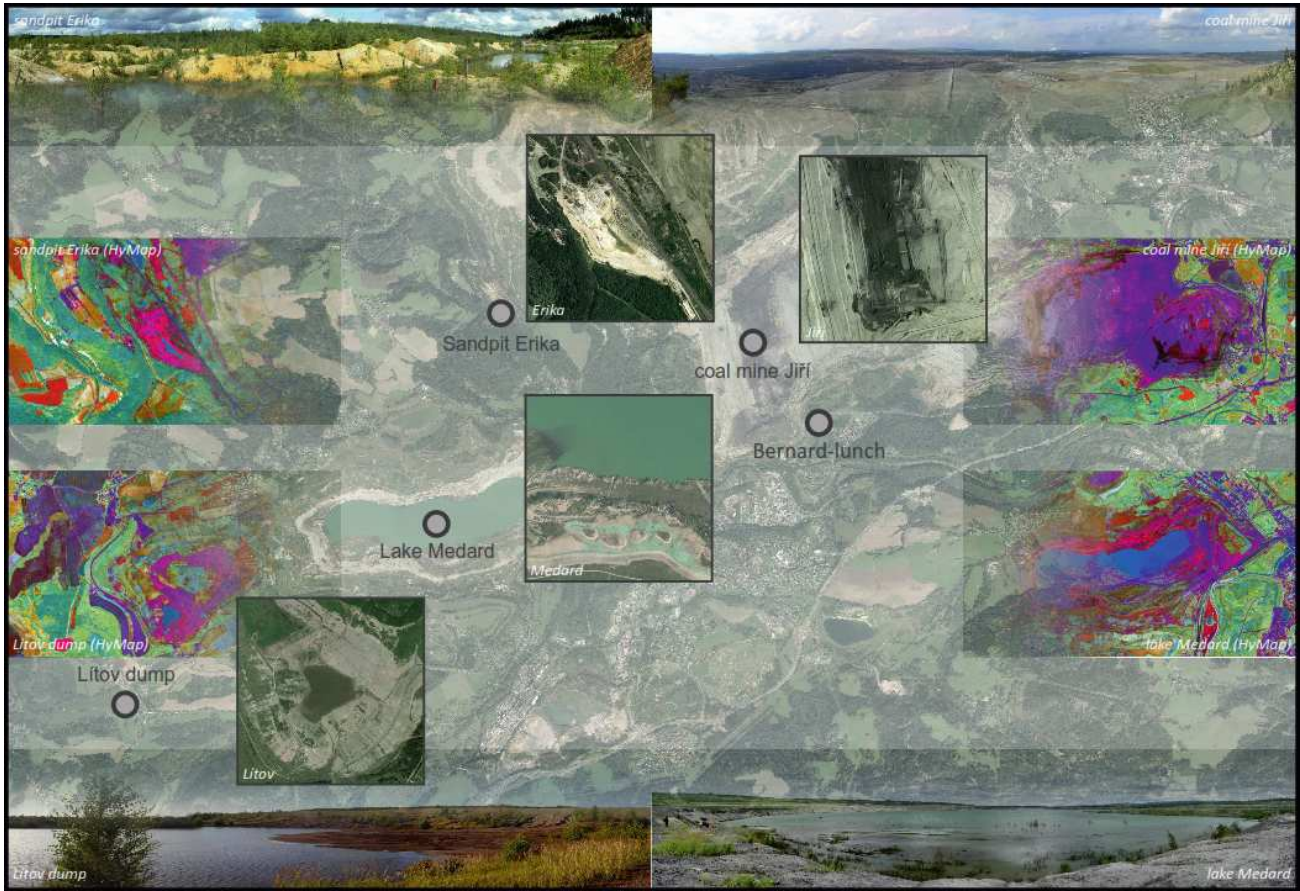
Bus tour with guided field demonstration and work in the lignite mining area in the North-West of the Bohemia province, west of the town of Karlovy Vary, close to the German border.

The tour will be guided by Veronika Kopačková and Jan Mišurec from the [Czech Geological Survey](http://www.cgebr.cz/), Czech Republic. The tour is prepared in collaboration with Petr Rojík, geologist working in the company Sokolovska uhelná, a.s. <http://www.suas.cz/>. Field Guide is at the conference web site: <http://www.csebr.cz/scerin/trip.html>.

The Sokolov basin, dating from the Oligocene to Miocene epochs, extends over 8 to 9 km in width and 36 km long with a total area of about 200 km². The basin comprises 60 % volcanic ejecta resulting from faults and volcanic cones and 40 % sediments. Hydrothermal fluids have been circulating along the faults where silicification and sulphur are found, and exposure of the latter can result in Acid Mine Drainage. Land use changes connected with mining activities and soil reclamation will be demonstrated on the background of the project GACR 205/09/1989 „Assessment of Mining Related Impacts Based on Utilization of Airborne Hyperspectral Sensor“ <http://www.geology.cz/project619100/> and other projects.



Field Trip: SCERIN-1 Day 3, Wednesday, 19 June 2013
 „LCLUC in Sokolov Region in Northwestern Bohemia affected by mining activities“



Materials supplied by guides of the Field trip - Veronika Kopačková and Jan Mišurec from the [Czech Geological Survey](#), Czech Republic.