

# COUNTRY HOT TOPICS

GOFC-GOLD Network: SCERIN / MedRIN

Country: Kosovo

Team : Festina Sadiku

## Project from the CLC 2012-2018 by the Environmental Protection Agency of Kosovo (AMMK)

To provide detailed and reliable information on land cover and its changes in Kosovo for the period 2012-2018.

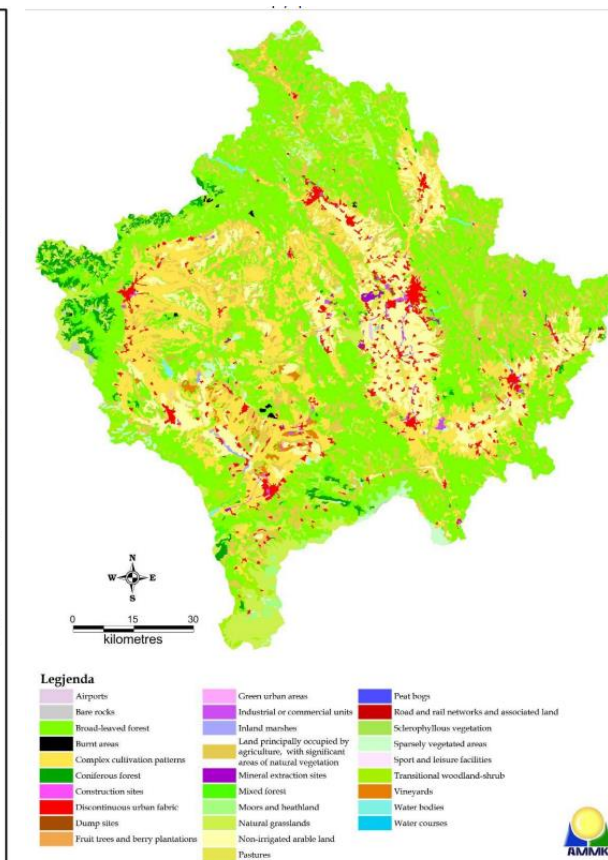
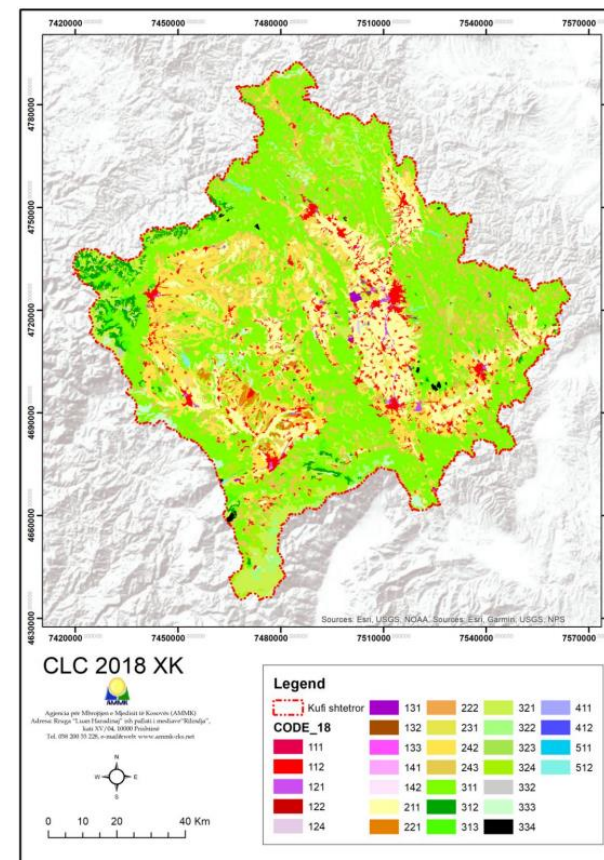
- Evaluate changes in land cover over the specified period.
- Assist in spatial planning and environmental management efforts.
- Align data with European standards to ensure international comparability.

## Joint Workshop of the GOFC-GOLD SCERIN and MedRIN Networks

CIHEAM conference center, Chania, Greece, July 16 – July 19, 2024

Land Cover Change (LCC) and Extreme Events in the Context of Climate Change

Mediterranean Agronomic Institute of Chania  
 Region of Crete  
 Eratosthenes Center of Excellence, Cyprus University of Technology  
 Aristotle University of Thessaloniki  
 NASA LCLUC Program  
 GOFC-GOLD and START, USA



# COUNTRY HOT TOPICS

GOFC-GOLD Network: SCERIN / MedRIN

Country: Kosovo

Team : Festina Sadiku

## Achieved

- Successfully analyzed land cover changes in Kosovo from 2012 to 2018, providing a comprehensive overview of the transformations in various land categories.
- Identified significant changes in urban expansion, agricultural areas, and forested regions, aiding in understanding the impact of human activities and natural processes.
- Developed detailed land cover maps that serve as critical tools for decision-makers and planners.

Joint Workshop of the GOFC-GOLD SCERIN and MedRIN Networks

CIHEAM conference center, Chania, Greece, July 16 – July 19, 2024

Land Cover Change (LCC) and Extreme Events in the Context of Climate Change

Mediterranean Agronomic Institute of Chania

Region of Crete

Eratosthenes Center of Excellence, Cyprus University of Technology

Aristotle University of Thessaloniki

NASA LCLUC Program

GOFC-GOLD and START, USA



## Future plans

- Regular updates to land cover data to maintain current and accurate information.
- Further integration of advanced satellite imagery, aerial photography, and GIS tools to improve data precision and visualization.
- Enhance monitoring efforts in protected areas to understand changes and impacts on biodiversity, developing conservation strategies.